



Directions and provisional rules for Field House Farm flying site

May 2016

How to get there



From Hartlepool, leave the A689 at the traffic lights and follow the road through Greatham bearing right to leave the village. Look out for a narrow road on your left marked Field House Farm.

From Billingham, leave the A689, turning right onto the road signposted for Greatham (just after the Dalton Piercy turn off). Look out for a narrow road on your right marked Field House Farm.

Follow the farm road going very slowly as this route is popular with walkers, cyclists and riders on horse back, please give way to them.

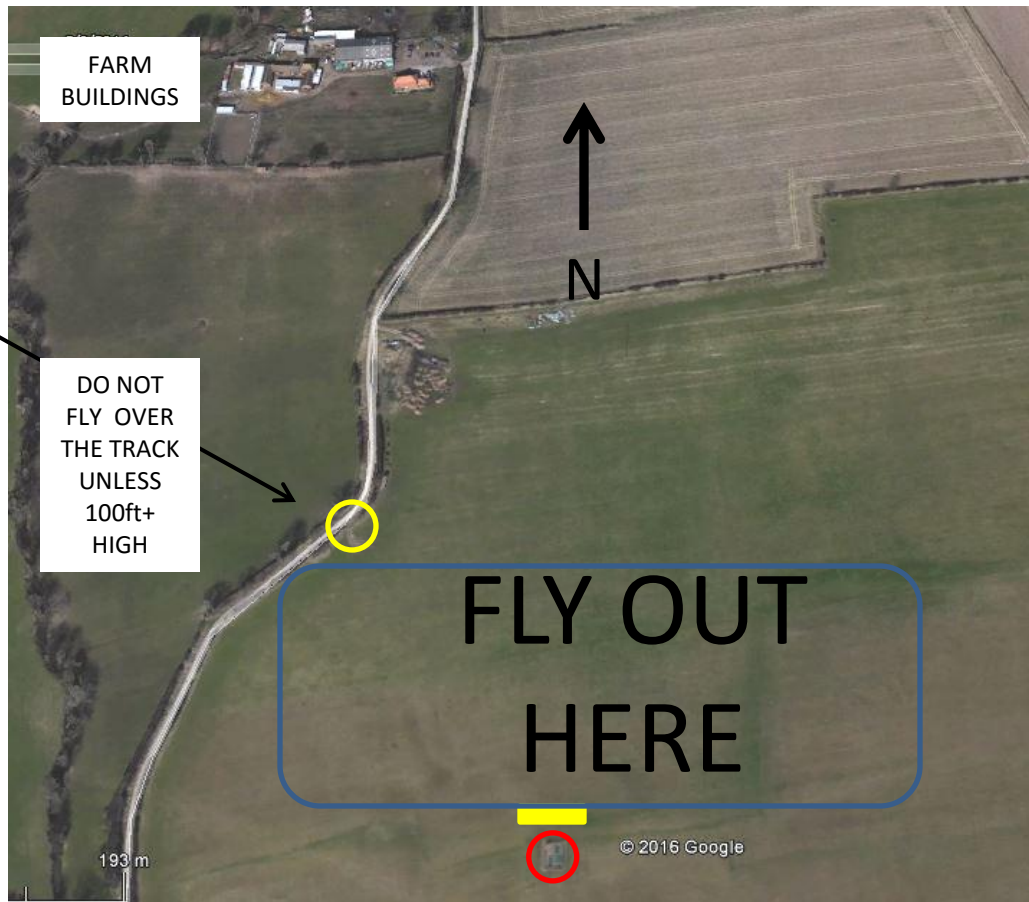
After you pass the farm buildings on your right hand side the road narrows to a track. Look out for a gate on your left hand side. Ignore the first one and continue to a second one just past a shattered tree.



GATE INTO FIELD BEWARE OF LOOSE ROCKS



PARK BY THE HEDGE JUST INSIDE THE GATE



ENTER THE FIELD BY THE GATE SHOWN AND PARK NEXT TO THE HEDGE JUST INSIDE THE GATE.
UNLOAD HERE AND WALK ACROSS TO THE FLYING STRIP (**DO NOT TAKE VEHICLES ACROSS**). YOU WILL BE WALKING UNDER THE ACTIVE FLYING AREA SO BEWARE AND ONLY CROSS WHEN IT IS SAFE.
THE PITS AREA IS ALONG THE EDGE OF THE STRIP NEXT TO THE SMALL FENCED ENCLOSURE. KEEP TO WITHIN A COUPLE OF METRES FROM THE EDGE

Rules for the use of Field House Farm flying field

These rules are a supplement to the normal flying codes of behaviour and are related to the specific requirements of this site.

- Drive very carefully along the farm road and track and be courteous to the other users.
- Leave the gate to the field as you find it. Be careful opening and closing it as it is heavy and the hinges are in a poor state of repair.
- Keep to the edge of the field when driving in. This is a hay crop field so the grass will be long in summer months and we must keep damage to a minimum.
- Park close to the hedge in the area shown on the preceding page. Parking nose-in to the hedge will allow cars to manoeuvre with minimal intrusion into the field.
- **Do not drive across to the strip. No vehicles should be driven across the field.**
- Fly from the designated area as shown on the previous sheet. Do not overfly the road unless the model is at least 100ft high.
- You should be flying in front of you with the Pits area and the fenced enclosure behind you.
- Do not fly near the farm buildings.
- All engines must have effective mufflers.
- There are large high voltage pylons to the south of the flying area. Under no circumstances fly in this area of the field. If cross winds dictate take off in that direction make your turn away as soon as possible.